



## Dear Steve

Alan recently concluded our involvement on the first phase of a major blown down at Red Road flats in Glasgow. Although the 27 storey, triple tower steel frame structure presented numerous challenges in terms of the demolition itself, it is felt that the organisation, preparation and execution of the exclusion zone **evacuation**, to ensure the safety and well being of the residents, deserves special mention.

## Demolition Evacuation: more important than the explosives element? Yes.

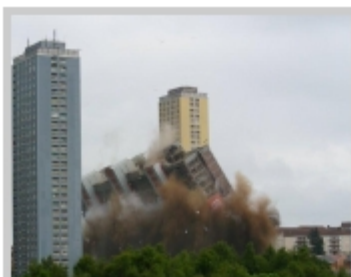


Evacuation activities are extensive and include visits to every house and flat within the zone, including re-visits, organisation of their needs and requirements for evacuation, pets, language barriers, transport for the elderly and infirm, residential and care home coordination, temporary accommodation and welfare and security of their properties until their return.

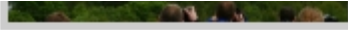
The culmination of this is the evacuation proper, which involves moving the residents from their homes early on a Sunday morning regardless of the weather.



Evacuation for a demolition is important and complex at the best of times, however this particular project required liaison with the Home Office, evacuation of a privately operated Care Home, temporary short closure of two major motorways and the evacuation of six, 32 storey blocks of flats in time for the demolition around lunchtime.



The six 'point blocks' and care home presented a major complexity, and the staff of Y People and the home were commended for their assistance and participation. Residents of the flats evacuated ahead of schedule and as previously rehearsed. Patients were prepared ahead of time, then transported to and looked after at another location for the day. This included making sure they had all the medications, food and facilities to ensure their well-being.



Timing these events to coincide with the planned demolition takes a lot of coordination, many meetings and a good deal of people skills to help everyone understand that they and their properties will be safe, looked after and cared for on the day.

The most common concern we hear from evacuees is the security of their homes during the evacuation. As such, security measures are normally communicated to the individual resident during the house to house visits or through a telephone call or visit to the project office.

We are happy to report that everything went well on the day and all residents within the evacuation zone were moved out and returned safely and comfortably.

We hope that this short article has given a greater insight into the activities involved in the execution of this very important, and sometimes understated, element of demolition operations.

If you would like to see the demolition itself, you can find a short video on the BBC website: [Glasgow skyline changes as Red Road flats are demolished](#).

Warm regards,

**Martin Bjerregaard & Alan Ramsay**

**D3 Consulting Limited**  
Lower Court  
Littlehempston, Totnes,  
Devon, TQ9 6LU

Tel: +44(0)1803 840888  
Fax: +44(0)1803 231230  
E-mail: [office@d3-consulting.com](mailto:office@d3-consulting.com)  
Web: [www.d3-consulting.com](http://www.d3-consulting.com)